

M E E T I N G S U M M A R Y

PROJECT: Denver Mountain Parks Master Plan **PROJECT NUMBER:** 0622

ISSUE DATE: October 2, 2007

PRESENT: Councilwoman Peggy Lehmann, Co-chair DMP Advisory Group
 Landri Taylor, Co-chair DMP Advisory Group
 Bart Berger, Denver Mountain Parks Foundation
 Susan Baird, Denver Parks Natural Area Planner
 Tina Bishop, Mundus Bishop Design, Inc.
 Bill Mangle, Natural Resource Planner, ERO Resources

See attached list of Advisory Group members

FROM: Tina Bishop, Mundus Bishop Design, Inc.

RE: **Denver Mountain Parks Master Plan Advisory Group Meeting #2, August 8, 2007**

ENCLOSED: Advisory Group Member Attendance List

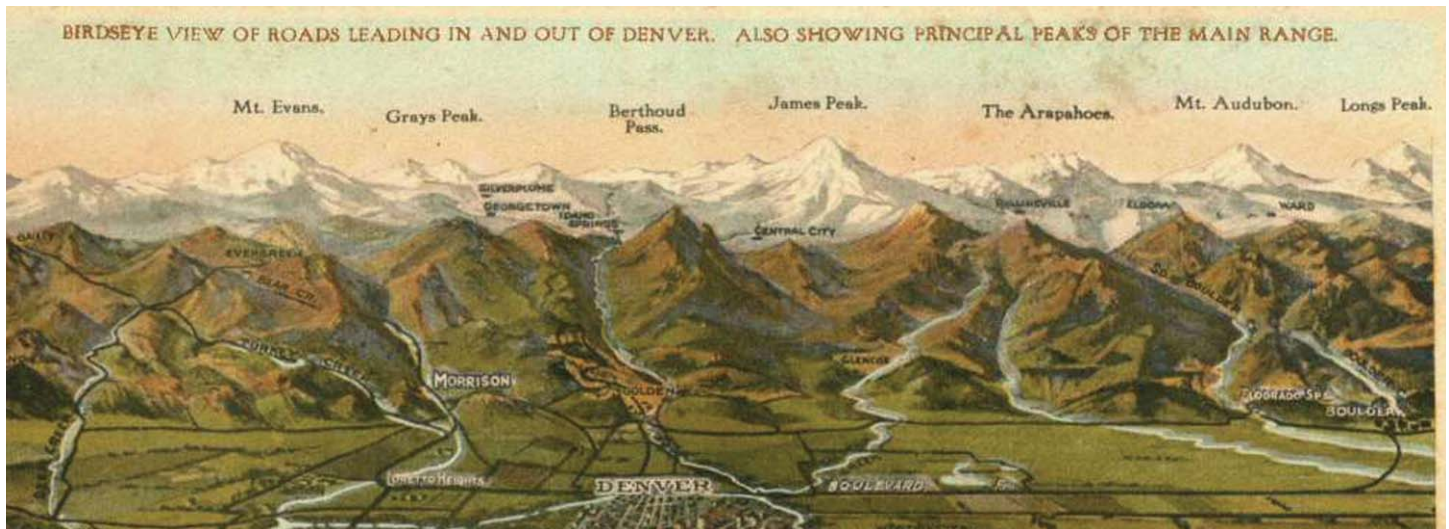
cc: Advisory Group members

1. Councilwoman Peggy Lehmann and Landri Taylor welcomed the Denver Mountain Parks Advisory Group Members to the second advisory group meeting.
 - a. Members, agency staff, and consultants introduced themselves.
 - b. Advisory Group members shared their insights about the DMP system. Most had attended one of the tours provided by Denver Parks staff and had visited parks on their own. The following are comments from participants.
 - Please provide an additional session on the funding and organizational strategy since some Advisory Committee Members will need to miss the September 12 meeting.
 - Confirm that a portion of the infrastructure ballot measure will be allocated to Denver Mountain Parks – specifically a portion of the mill levy. The bond initiative is slated for the November 6, 2007 election.
 - Steve Turner – It’s critical that a real constituency for Denver Mountain Parks within the City & County of Denver be developed. In asking for support to get the monies back into the infrastructure bond, there was a distinct lack of understanding of the need and rationale. People are fond of the Mountain Parks but need more to get them to care.
 - Frank Young - Clear County wants to do a joint open house with Denver Mountain Parks. Clear Creek residents want to see Denver manage their lands and they are willing to help promote the Denver Mountain Parks.
 - Ralph Schnell – Denver should be congratulated on this process. It is working in pulling together political and community support and is an important forum for generating policy ideas.

- Melanie – Douglas County acknowledges that many of the users to their open space lands come from the other counties and that this is a regional open space where all municipalities must fund and manage their lands. It's important to do what is best for Colorado. Also take note that fire has no boundaries.
 - Councilwoman Lehman – Awareness of open space issues is higher in those counties where there is a dedicated open space tax. Denver needs to raise awareness at the grassroots level, so that constituents are contacting council members about Denver Mountain Parks issues.
2. Tina Bishop, MBD and Bill Mangle, ERO Resources provided a presentation on the role of the DMP system in Denver and the region, and provided information on its recreational uses and natural resources. The presentation included the following. A more detailed summary of the recreation analysis and natural resource investigation will be prepared as part of the master plan report.
- a. A summary of the facts on the DMP system was reviewed, refer to attachment.
 - b. An overview of Denver's commitment to its Mountain Parks and acknowledgement that they are integral to Denver's image, that they provide an economic benefit particularly in the role they have in drawing tourists to Denver, and that they are an important part of the broader regional open space system.
 - c. The findings from the analysis of the users of the Denver Mountain Parks, which noted that 1/3 are from Denver, 1/3 from the county in which the park is located, and the last 1/3 from other Colorado counties. A portion of the last 1/3 also includes international visitors to parks including Red Rocks Park, Lookout Mountain Park and Buffalo Bills Museum and Grave, and Echo Lake Park. These same statistics occur in the county open space systems.
 - d. The analysis noted that there is a cosmopolitan mix of users of the Denver Mountain Parks who are multi-cultural and multi-lingual.
 - e. The finding from the natural resource investigations, which noted that the Denver Mountain Parks are a microcosm of Colorado's ecosystems. The DMP lands included a diversity of geology, topography, vegetation and wildlife. They include wetland and riparian, several areas of old growth forest, sensitive alpine and sub-alpine plant communities, and rare cliff habitat for raptors. These lands provide important habitat for resident elk populations, mountain lions, bears, and mountain goats.
 - f. An overview of the Denver Mountains Parks facilities noted that the 100 year legacy of the system provides a distinct character that is unique in Colorado's open space system. This legacy is the result of the facilities being designed and built in accordance with naturalistic principles where facilities were integrated with their natural environs – topography, vegetation and views. In contrast to other open space lands, users of the Mountain Parks are drawn to the naturalistic setting with amenities that are integrated with the natural environment that is offered by the Denver Mountain Parks.
 - g. The findings indicate that Denver Mountain Parks are popular as hiking and picnicking destinations. For example, on a busy weekend O'Fallon Park can experience up to 1000 users, necessitating traffic control.
 - h. Several issues and concerns were identified, including need for additional trails, lack of wayfinding, degradation of facilities, need for basic comforts such as restrooms, need for erosion control, and erosion in high use areas. Most issues occur in high use areas.

- i. A description of the tools that will be provided through the master planning process was provided and included evaluation criteria for recreational uses, design guidelines, and implementation strategies.
3. The schedule of future meetings was reviewed.
 - a. Two more roundtable discussions will occur: 1) Communications and Marketing Roundtable (not yet scheduled), and 2) Funding Roundtable (not yet scheduled). The Recreation Roundtable occurred on July 18, 2007.
 - b. The third Advisory Committee Meeting is scheduled for September 12, 2007 and will be held from 8 to 10 am at the Chief Hosa Lodge. Trust for Public Lands (TPL) is preparing a feasibility study for the funding component of the master plan and they will present their preliminary findings.
 - c. The first public meeting will be held concurrently with the Daniels Park open house in Douglas County on August 22, 2007. The second public meeting will be held jointly with Jefferson County Open Space at Red Rocks Park on October 13, 2007.
 - d. Future Advisory Committee Meetings are scheduled for October 10 and November 14, 2007.
 - e. Three tours will be offered to help the Advisory Group members more fully understand the Denver Mountain Parks. The dates for the tours are: Friday, 13 July 2007 from 9 am to noon, Friday 20 July 2007 from 9 am to noon, and Saturday 28 July 2007 from 10 am to 1 pm.
 4. Councilwoman Lehmann and Landri Taylor lead a group discussion.
 - Note who Denver is partnering with. There are many opportunities to partner with the counties and other agencies.
 - AJ Tripp-Addison, Denver Mountain Parks superintendent, gave a quick overview of some of the partnerships that Mountain Parks has currently, including trail construction with Volunteers for Outdoor Colorado, Jefferson County Open Space, and USFS.
 - Cheryl Armstrong with the Beckworth Group noted that they provide youth and adult stewardship programs and
 - How are the funds for Denver Mountain Parks funneled through the city and through the Denver Parks department?
 - Consider developing a citizen's adhoc committee to oversee all of the Denver Mountain Parks activities and to raise awareness. Possibly as part of the Denver Parks and Advisory Board.
 - Build a constituency in the Denver community – within each council district. Focus on a clear message and on raising awareness.
 - From the presentations, my general reaction is 'whets the problem?' Need to show the real pressing issues, the degradation of resources, and need to build a case as to why you need more funding.
 - Need a big vision about where the Denver Mountain Parks could go and what they could be.

end

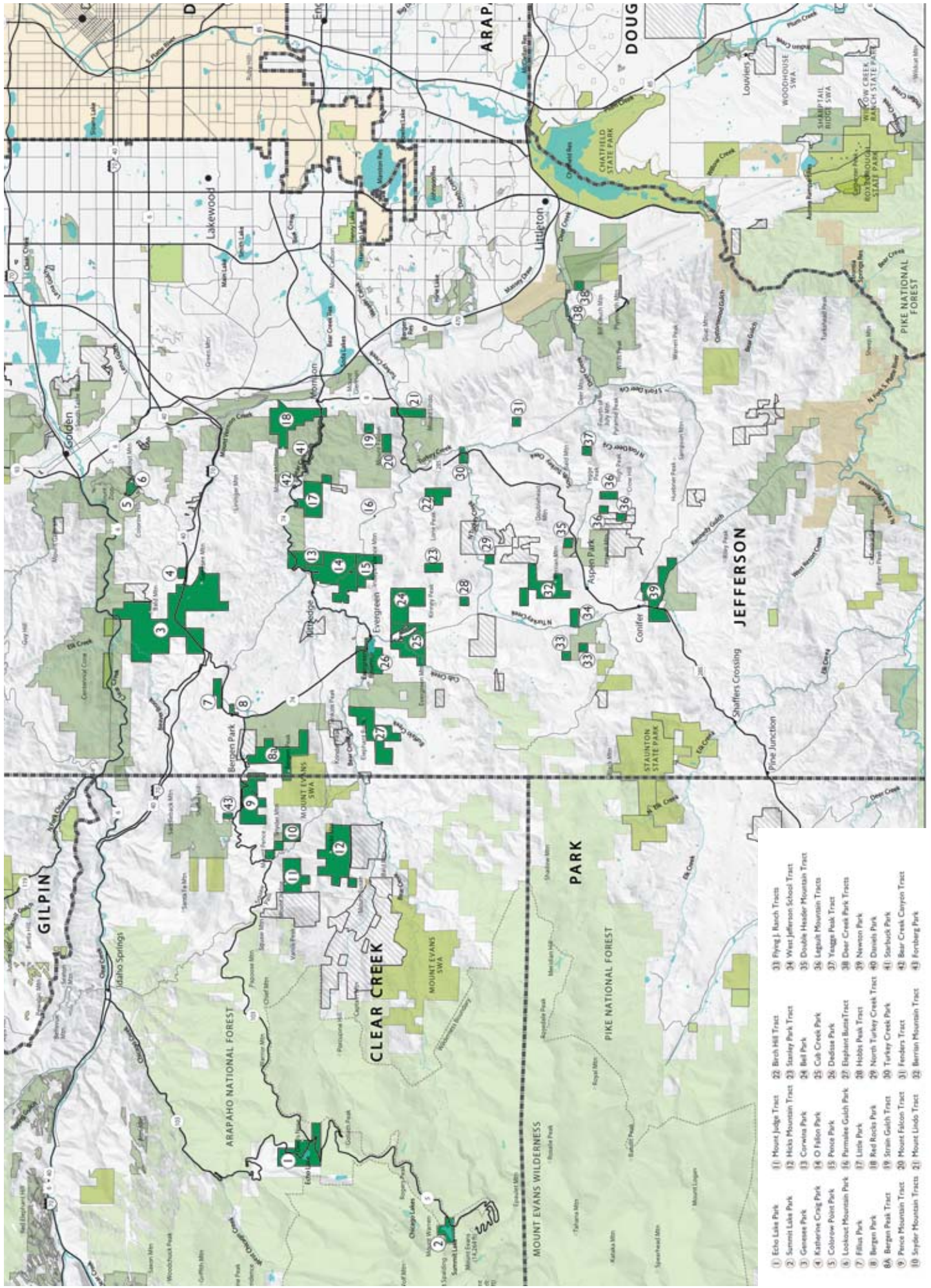


“The three chief things to be accomplished are: first, the provision of a system of first-class roads. . .; second, the protection of. . .the more important (mountain scenery). . .; third, the opening to the public for general use. . .resting places, picnic places, camping places, and ultimately for shelters and hotels. . .” page 5, Park Commissioners – 7/17/12 – letter from Frederick Law Olmsted, Jr.

Denver Mountain Parks Master Plan

August 9, 2007

- Owner:** City & County of Denver
Department of Parks & Recreation, Denver Mountain Parks Division
- Beginnings:** 1912 · Mountain Parks Commission · Frederick Law Olmsted Jr., designer · ½ mill property tax
- Area:** 14,000 acres · over 22 square miles · 50 parcels of land · 31 named parks
72% of Denver’s park and open space system
- Location:** within 50 miles of Denver · Four counties: Jefferson County, Grand County, Douglas County & Clear Creek County
- Funding:** \$685,000 +/- annual funding · Less than 1% of Parks’s annual budget · mill levy dissolved in 1955
- Users:** Denver residents, county residents, national and international travelers
- User Profile:** multi-lingual · multi-cultural · 52% male · all ages (21 to 55 - 70%)
· 57% married · 71% hiker, runner or walker · 55% frequent visitor
- Recreation:** hiking · picnicking · fishing · bicycling · wildlife viewing · camping · mountain biking · concert goers · group picnicking · Ropes Course · kids camps
- Resources:** managed bison & elk herds · resident elk herd · mountain lion · bear
- Icons:** Red Rocks Amphitheatre and Park · Buffalo Bills Museum · Winter Park
Genesee Park · Echo Lake Park ·



Master Plan • Denver Mountain Parks • August 2007